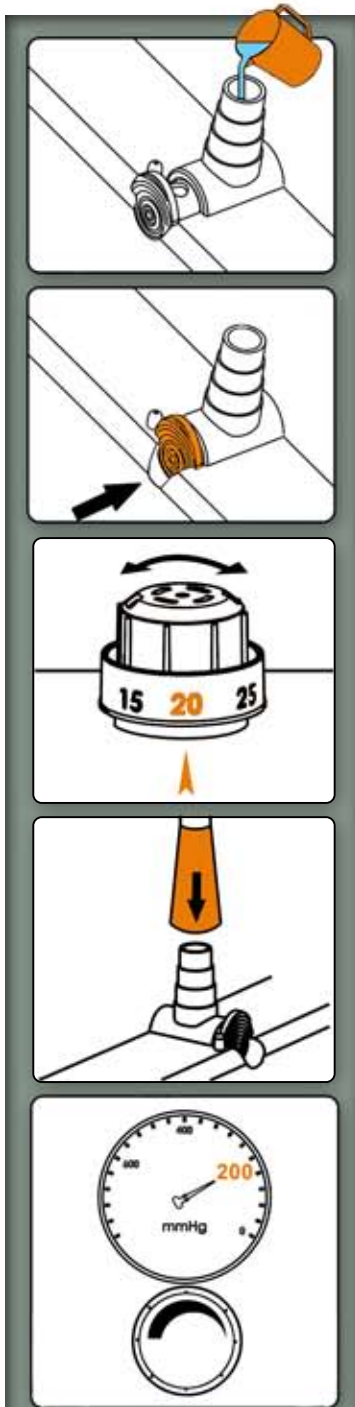


THORAMETRIX™

Dry thoracic drainage system



1 Fill the water seal chamber

2 Push valve closed

3 Set the suction regulator to the desired vacuum level

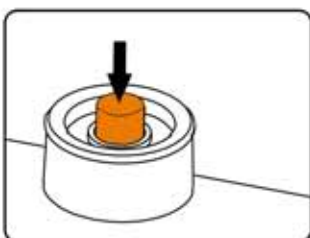
4 Connect the system to external vacuum service unit

5 Set the external vacuum service unit to 200mmHg

System is ready for use



6 Confirm that vacuum indicator has turned to red



ATTENTION

Press to relieve high negativity and when suction regulator is adjusted to a lower vacuum level

BIOMETRIX
CRITICAL CARE SOLUTIONS

